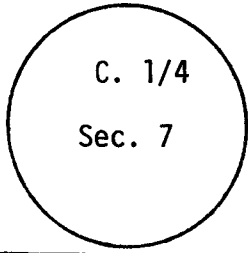


CERTIFIED LAND CORNER RECORDATION

R 66 W DESCRIPTION OF CORNER EVIDENCE FOUND, AND ORIGINAL RECORD (If known)

T
16
N



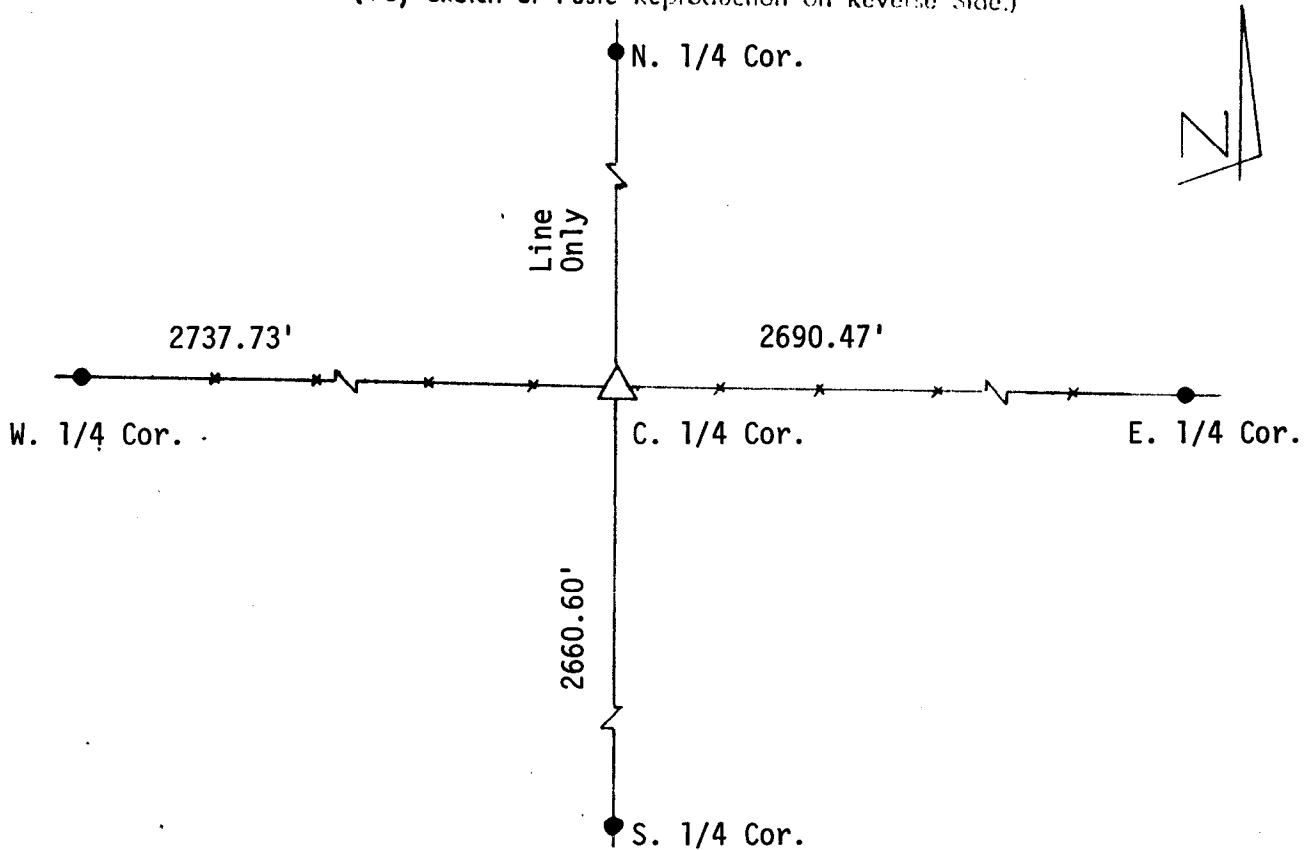
Original Record: None

Corner Evidence: None

DESCRIPTION OF MONUMENT AND ACCESSORIES ESTABLISHED TO PERPETUATE THE ORIGINAL LOCATION OF THIS CORNER:

Set C.S.S.A. plastic cap on #5 rebar with old tire casing around it. Set in accordance with procedures set forth in "Manual of Surveying Instructions 1973", U.S. Department of the Interior.

SKETCH, WITH COURSE AND DISTANCE TO ADJACENT CORNER IF DETERMINED IN THIS SURVEY (May Sketch or Paste Reproduction on Reverse Side.)



I, Glen L. Roberts certify that I have carefully performed or reviewed the work done on the diagrammed corner as reported on this recordation form and approve the same.

Glen L. Roberts
Signature of Surveyor

WYO P.E. & L.S. 347
Registration No.

STATE OF WYOMING,
Office of Clerk and Recorder,
County of Laramie

625309

This "corner record" was filed for record on the JUL 1 day of 1981, was noted on the cross-index plat and is assigned page No. G-3, in book No. 16-66.

Janet C. Witchard
County Official

Cross Index No.	T.	R.	Mer.
.....	T.	R.	Mer.
.....	T.	R.	Mer.
.....	T.	R.	Mer.
.....	T.	R.	Mer.
.....	T.	R.	Mer.
.....	T.	R.	Mer.

G3 16-66